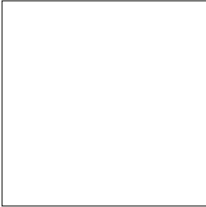


 **WORK
WEAR
& CARE**

KENTAUR®
Work Wear of Denmark



TENCEL COLOR CARD



KENTAUR[®]
White



KENTAUR[®]
Virtual grey



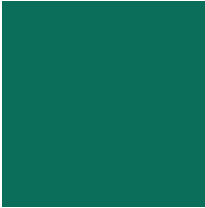
KENTAUR[®]
Blue



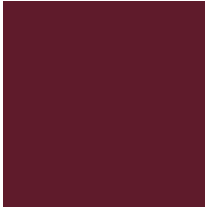
KENTAUR[®]
Hospital blue



KENTAUR[®]
Sailor Blue



KENTAUR[®]
Hospital green



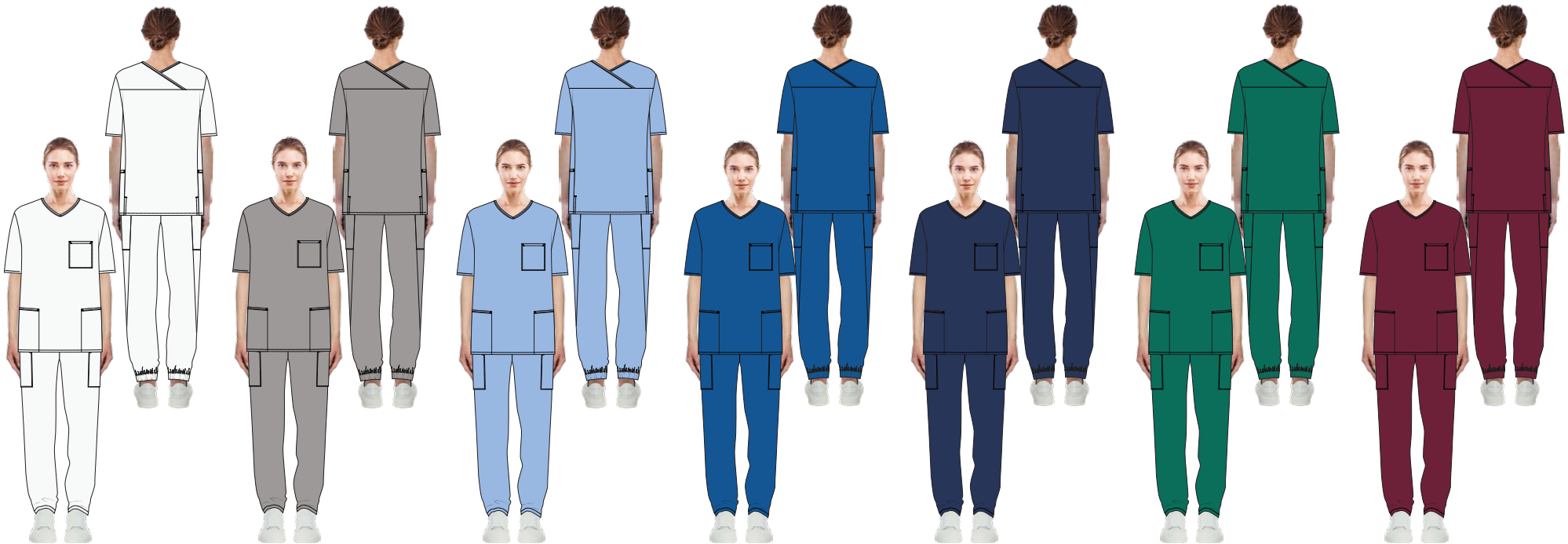
KENTAUR[®]
Bordeaux

COMFY FIT SET

Our Comfy fit set is designed to give the user the best possible comfort and functionality. The Comfy Fit set provides a clean look that favors both men and women. While offering new ergonomic neckline, the smart V-neckline on back moves the pressure from the neck. This provides the user a workday without unnecessary pressure on the neck which can help reduce neck pain. Paired with the smart pants with ergonomically correctly placed pockets with space for iPad mini and A5 notebook. See product specifications for style 15519 & 16527 on pages 4-5

Polyester/TENCEL™ garments offers soft and smooth surfaces and good moisture absorption and breathability. Offering improved wearer comfort. Kentaur's polyester/TENCEL™ can withstand high-temperature industrial laundering. The combination of TENCEL™ lyocell fiber and polyester offers enhanced durability, making professional clothing extremely durable which results in a long service life of the garment.

COLORS - This Set will be available in range of colors as you can see below



15519 & 16527-White
50/50% CLY/PES
210g/m2

15519 & 16527-Virtual grey
50/50% CLY/PES
150g/m2

15519 & 16527-Blue
50/50% CLY/PES
150g/m2

15519 & 16527-Hospital blue
50/50% CLY/PES
150g/m2

15519 & 16527-Sailor Blue
50/50% CLY/PES
150g/m2

15519 & 16527-Hospital green
50/50% CLY/PES
150g/m2

15519 & 16527-Bordeaux
50/50% CLY/PES
150g/m2

**COMFY FIT
UNISEX TOP
15519**



GENTLE ON
SKIN



MADE IN
GREEN

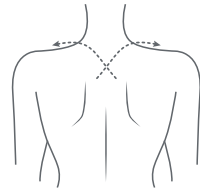
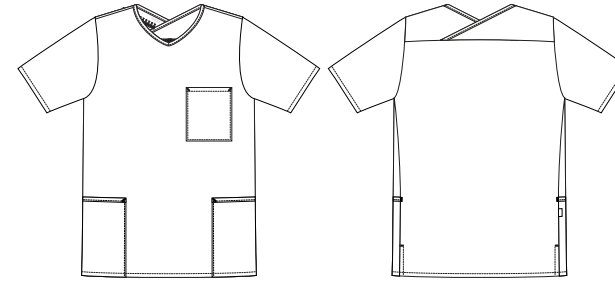


TENCEL
LENZING



KENTAUR®
Work Wear of Denmark

St. Joris
Laundry Services



Neckline that moves the pressure from the neck
Which can help reduce neck pain



Registered Design
DM/221854



Ergonomic
NECKLINE

15519 COMFY FIT UNISEX TOP

- Neckline that moves the pressure from the neck
Which can help reduce neck pain
- V-neck
- 1 chest pocket
- 2 hip pockets
- Ergonomically correct placed hip pockets
- Side slits
- Size indicator with colored label
- MADE IN GREEN
- Size 2XS-4X



Ergonomically correct placed hip pockets



PRACTICAL
POCKETS



GENTLE ON
SKIN



ERGONOMIC
NECKLINE



Size indicator with colored label

- Grey | Size: XXS
- Yellow | Size: XS
- Green | Size: S
- Blue | Size: M
- Red | Size: L
- Black | Size: XL
- Purple | Size: 2XL
- Brown | Size: 3XL
- Orange | Size: 4XL

Sizes & product measurements

Measurement tolerance +/- 2cm. All measurements are in cm. Expected measurements after approx. 3 times wash

	2XS	XS	S	M	L	XL	2XL	3XL	4XL
Full chest width	102	106	110	115	120	125	130	135	140
Full bottom width	110	114	118	124	130	136	142	147	152
Back length	72,5	73	74	75,5	77	78	78,5	79	80

**COMFY FIT
UNISEX PANTS
16527**



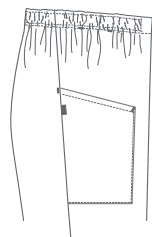
GENTLE ON
SKIN



MADE IN
GREEN



TENCEL
LENZING



Ergonomically correctly placed pockets
with space for ipad mini and A5



PRACTICAL
POCKETS



GENTLE ON
SKIN

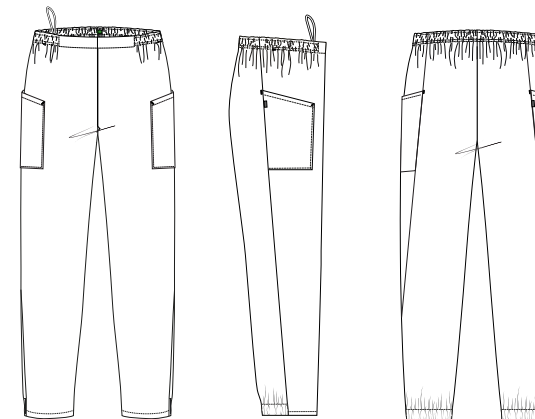


ADJUSTABLE
WAISTBAND



KENTAUR®
Work Wear of Denmark

St. Joris
Laundry Services



16527 UNISEX PANTS

- Elastic and tie strings in waist
- Size indicator with colored label
- Ergonomically correct placed thigh pockets
- Elastic by the ankle
- MADE IN GREEN
- Size 2XS-4XL



Size indicator with colored label

Grey | Size: XXS Yellow | Size: XS Green | Size: S Blue | Size: M Red | Size: L

Black | Size: XL Purple | Size: 2XL Brown | Size: 3XL Orange | Size: 4XL

Sizes & product measurements

Measurement tolerance +/- 2 cm. All measurements are in cm. Expected measurements after approx. 3 times wash

	2XS	XS	S	M	L	XL	2XL	3XL	4XL
Waist width	68	68	70	75	80	90	97	105	114
Hip width	97	102	105	110	119	129	140	149	159
Frontrise, incl. WB	23	25	26	28	32	32	32	34	34
Backrise, incl. WB	37	39,5	14,5	43,5	47	47,5	48,5	50	50
Inseam	82	82	82	82	82	82	82	82	82



TENCEL™ LYOCELL

FABRIC FIBER NO. 1 FOR SUSTAINABILITY

WHY ARE SO MANY PLEASED WITH TENCEL™?

The Kentaur design team is no exception. We show responsibility, and we are constantly seeking sustainable fabrics that make a difference environmentally, but at the same time meet our strict demands for comfort, functionality design. The softness of the fabric makes it highly suitable as work wear next to the skin, e.g. pants, T-shirts, overalls, and comfort is excellent when sitting, standing or bending over, when daily work requires highly flexible clothing. Our designers have created a collection in which the fabric properties and design interact in sporty work uniforms with indispensable details for everyday functionality. The fabric also distinguishes itself in the many fine, clear colors, which stand up to washing. Last, but not least, we are pleased to be able to supply a fiber that does not have a negative environmental impact.

WHAT IS TENCEL™ LYOCELL?

TENCEL™ Lyocell is one of the most impressively environment-friendly materials, and a superb substitute for cotton. TENCEL™ Lyocell fiber originates from nature, and is certified as biodegradable. It can be composted naturally, because it is made of cellulose fiber from trees such as fir or beech. The wood mass for the fiber production is obtained from natural thinning of forests and left-overs from the wood industry. Brushwood is dissolved and converted into fiber which can be spun into yarn and knitted or woven into fabric. The solvents for dissolving the brushwood to cellulose are re-used in a closed loop system, and the energy for the fiber production is re-used. In this way process water and solvents are re-used with a recovery rate of more than 99%.

TENCEL™ LYOCELL HAS MANY ADVANTAGES:



THERMOREGULATION

The smooth fiber surface of TENCEL™ Lyocell cellulose fiber absorbs moisture. This supports the body's natural capacity for temperature regulation and helps the skin to remain dry and comfortable.



INHIBITS BACTERIAL GROWTH

TENCEL™ Lyocell fiber absorbs moisture effectively. This means that there is less moisture available at the surface compared with synthetic fabrics. With less moisture, conditions are less suitable for bacterial growth.



ANTISTATIC

TENCEL™ Lyocell's capacity for absorbing moisture means that the fibers do not become statically charged.



GLOSSY COLORS

The smooth surface of TENCEL™ Lyocell fibers allows dye to penetrate deep into the structure of the fiber, and gives the colors an impressive gloss.



FIBER STRENGTH IN TENCEL™

TENCEL™ Lyocell fibers have a greater strength compared with other cellulose fibers, which means the fabric is durable and withstands long use.



SUSTAINABLE PRODUCTION WITH TENCEL™

TENCEL™ Lyocell fibers is produced environmentally responsibly in a closed loop process, in which wood mass is converted into cellulose fiber with highly effective use of resources and low environmental impact. Consumers ensure that their choice of clothing does not contribute to a negative environmental impact when they choose TENCEL™ Lyocell.

Comfort with a natural touch

TENCEL™ is a trade mark belonging to Lenzing AG.



Fabrics with Tencel™

LYOCELL FIBER

WASHING

Consult your detergent supplier:

In consultation with your detergent supplier, a wash process should be developed to remove the soiling and staining considering the special requirements for fabrics including TENCEL™ Lyocell fibers.

The washing process can be split into the following stages depending on the level of soiling:

General: lower loading capacity (appr. -20%) and corresponding higher liquor ratio

1. pre-treatment of the garment
2. pre-wash – to remove solid matter so that detergents act on the soiling and staining effectively
3. main wash – at a temperature maximum 75°C and a high liquor ratio / lower detergent concentration. PH after neutralization should be set between 6.4 and 7.6, please add adequate fresh water during the neutralization process
4. bleaching for white garments, should be done on low concentration (use other bleaching agents than hypochlorite to avoid cellulose degeneration)
5. rinsing – Use of softeners is not recommended

CAUTION

To avoid setting creases (thermal shock) when the wash load is being cooled down from temperatures of 50-55 °C, the rate of cool-down should not exceed 2-3 °C per minute.

The hydro extraction of TENCEL™ garments should not be excessive, otherwise creases can set in. The extraction should be set to allow 30-40% water by weight to be left in the garments for optimum appearance after drying.

TUMBLE DRYING

The tumble-drying cycle (one dot) should include a cool down-period so that creasing is avoided. The residual moisture after drying should be 10-12%

TUNNEL DRYING

If the garments are tunnel-finished, they should be fed into the tunnel finisher separately from other blends and finishes so that efficient drying and finishing takes place.

A fabric surface temperature of 120-130 °C is adequate for good appearance. Bone-dry garments must not be tunnel-finished as this can cause problems such as shrinkage and garment size change.